

# TP SLOTTED CANTILEVER CHANNEL

## ■ Application

- Construction of ventilation and air duct systems, HVAC
- For electrical, telecommunication installations and piping
- Machines and technical facilities construction

Item Number	Channel	Length (Meter)
TP 12250	TP STC 27x18x1.2mm	0.20
TP 12251	TP STC 27x18x1.2mm	0.30
TP 12252	TP STC 38X40X2mm	0.20
TP 12253	TP STC 38X40X2mm	0.25
TP 12254	TP STC 38X40X2mm	0.30
TP 12255	TP STC 38X40X2mm	0.35
TP 12256	TP STC 38X40X2mm	0.40
TP 12257	TP STC 38X40X2mm	0.50
TP 12258	TP STC 38X40X2mm	0.60
TP 12259	TP STC 41x21x2.5mm	0.15
TP 12260	TP STC 41x21x2.5mm	0.30
TP 12261	TP STC 41x21x2.5mm	0.45
TP 12262	TP STC 41x41x2.5mm	0.15
TP 12263	TP STC 41x41x2.5mm	0.30
TP 12264	TP STC 41x41x2.5mm	0.45
TP 12265	TP STC 41x41x2.5mm	0.60
TP 12266	TP STC 41x41x2.5mm	0.75

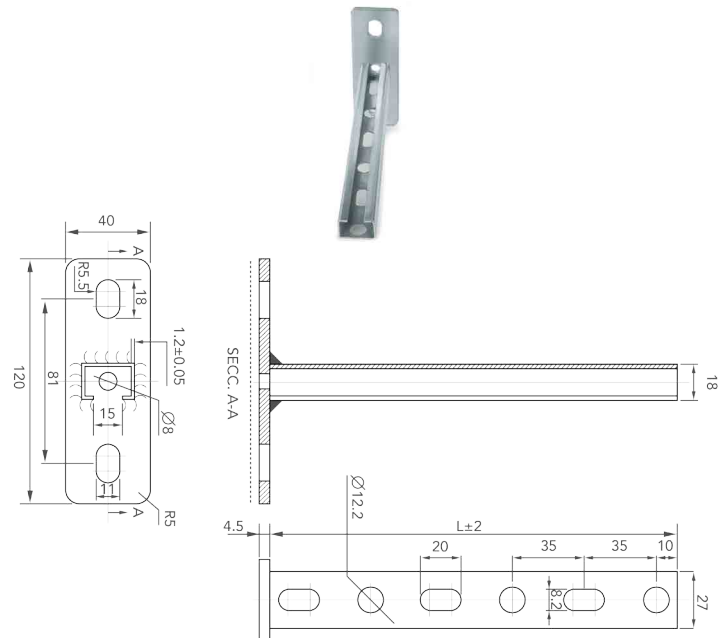
## ■ Cantilever Channel Dimension

### ■ TP Cantilever Channel 27x18x1.2mm

Properties: Zinc-plated slotted cantilever

Zinc-plated coating  $\geq 5\mu\text{m}$

Length = 0.2, 0.3m



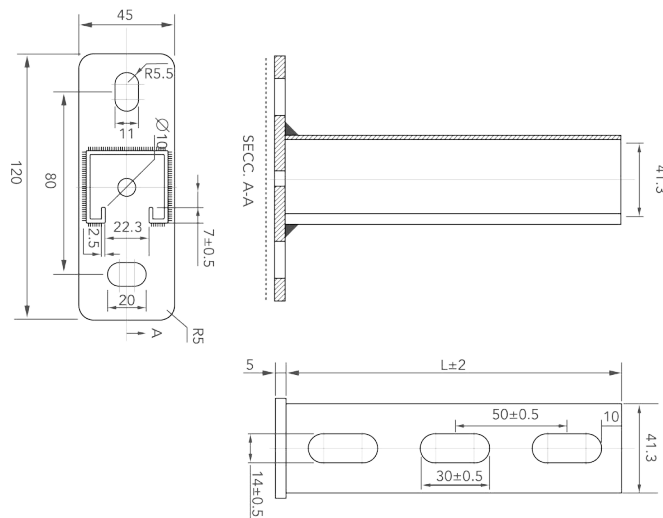


■ **TP Cantilever Channel 41x41x2.5mm**

Properties: Zinc-plated slotted cantilever

Zinc-plated coating  $\geq 5\mu\text{m}$

Length = 0.15, 0.3, 0.45, 0.6, 0.75m



■ **Characteristics**

Dimension	Section [mm x mm]	Area [cm <sup>2</sup> ]	Moment of inertia I <sub>y</sub> [cm <sup>4</sup> ]	Moment of inertia I <sub>z</sub> [cm <sup>4</sup> ]	Resistant module W <sub>y</sub> [cm <sup>3</sup> ]	Resistant module W <sub>z</sub> [cm <sup>3</sup> ]
TP STC 27x18x1.2mm	27 x 18	0.84	0.37	0.97	0.34	0.71
TP STC 38x40x2mm	38 x 40	2.55	5.39	6.18	2.39	3.25
TP STC 41x21x2.5mm	41 x 21	2.28	1.32	5.54	1.03	2.70
TP STC 41x41x2.5mm	41 x 41	3.28	7.08	9.25	2.98	4.51